

# THE DEVELOPMENT OF E-JUSTICE IN SPAIN

## 1. INTRODUCTION

Within its courts, Spain has a high quality level for the EU standards: basic technologies, technologies for the administrative staff and technologies for supporting judges have reached a good level of development. However, Spain has still a long way to go before its courts reach an optimal level of computerisation. Although there are several applications of information and communication technologies, it is not possible to follow a fully electronic judicial proceeding yet. Lack of budget for IT is a major problem in a country that is still using 80% of the old system of paper and electronic files for most of the “procedural tier”.

Furthermore, there has not been a significant change in the organisational model of administration of justice and, therefore, in its operations. Although there are several reasons that can help us explain this situation, the main ones are resistance to change and the lack of coordination among different actors with competences in this field.

The implementation of the new judicial offices in Spain represents a good opportunity to overcome the often evident resistance. Different regional administrations of justice have developed specific plans to go from old judicial offices to new ones that among others incorporate the use of information and communication technologies and the elimination of paper from administration of justice.

## 2. EXCHANGE OF E-TOOLS INFORMATION WITHIN THE NATIONAL JUDICIAL SYSTEM AND AMONG LEGAL PROFESSIONALS

### a) ICT within the Court

#### IUS + RED

In April 2010, the Ministry of Justice and the Ministry of Industry, Tourism and Commerce of Spain signed a collaboration agreement for the development of digital public services. The program called *Ius+network* (“Ius+Red”), accomplished through the Public Enterprise “red.es”, aims to lay the foundation for technological development under the “Strategic Plan for the Modernisation of Justice”.

The agreement, approved at the last Council of Ministers, aims to achieve a technologically advanced model of Justice. Among the planned actions is the digitisation of the registration function in the Peace Courts

("Juzgados de Paz"), the provision of e-services to courtrooms and the enhancement of the Digital Judicial Records.

*lus+network* programme funding is allocated by the Ministry of Justice (for an amount of 47,429,753 euros) and the Ministry of Industry (for an amount of 29,110,882 Euros).

### **Civil Register Online**

"Civil Register Online" is an ongoing project that already digitised 431 Municipal Civil Registries of Spain. This body is also responsible for the registration of births, marriages and deaths of Spanish citizens living outside the national territory (pursuant to information received from Spanish consulates around the world).

The digitisation of the Central Civil Registry will comprise approximately 10,000 registry books, more complex than the books of the municipal records digitised so far, due to the existence of inscriptions of various consulates (with pages of different sizes and formats in a single book), as well as the poor state of repair and binding of the older volumes.

These actions fall within the lines of the "Strategic Plan for the Modernisation of Justice", aimed at the transformation of the Central Civil Registry in a people-oriented Global Registry, pursuing excellence and quality by providing a more agile, swift and effective public service.

### **b) ICT and communication exchange between courts, parties and professionals of law**

#### ***luriservice***

***luriservice*** is a Web-based system intended to provide the Spanish judiciary with a tool to facilitate knowledge management in daily judicial practice. It has been developed within the context of the SEKT project (2004 – 2006). The aim of SEKT was to develop and exploit semantically based knowledge technologies in order to support document management, content management, and knowledge management in knowledge intensive workplaces. Specifically, SEKT aimed at designing appropriate utilities to users in three main areas digital libraries, the engineering industry, and the legal domain providing them with quicker access to the right pieces of information at the right time.

This system provides the newly recruited judges with access to frequently asked questions (FAQ) through a natural language interface. The judge describes the problem at hand, and the application responds with a list of relevant questions-answers that offer solutions to the issue, jointly with a list of relevant judgments.

The precedents of *luriservice*, nevertheless, are to be found in the Observatory of Judicial Culture (OJC). Created in 2001 out of a national research project, the OJC focuses on research on judicial behaviour, reasoning, and professional profiles of judges and magistrates. OJC's main purposes are to

identify how the judges are currently working, which are their difficulties, and to provide the Spanish judicial system with useful tools to improve the performance of its judiciary. The methodology put in place from the beginning required gathering good descriptions of judicial units (organisational roles, tasks, workload, identification of problems, etc.), and this required the elaboration of both ethnographic and statistical data. Thus, in 2002, the Young Spanish Judges Survey 2002 targeted 129 judges with less than 4 years experience (out of 352 judges in their first appointment). To perform comparative analysis, 139 senior judges were also surveyed. An important aspect of the survey was that people in charge of the interviews with judges were newly recruited judges at the Judicial School who volunteered to take part into the project. The main objective of the survey was to identify the most frequent problems that incoming judges usually face in their first appointment. A special emphasis was put on ICT, given their strong impact on the daily activity of judges (use of databases on legislation and jurisprudence, case management systems, and the Internet). By using multiple correspondence analysis (MCA) and cluster analysis methods, researchers constructed a typology of judges based on four clusters. Results showed that only the first one, composed of both junior and senior judges, used regularly digital databases and the Internet.

Judges as users have been an essential part of the *luriservice* project from the very beginning. Their role as final users, therefore, must not obscure their contribution to each stage of the project. The role of the users may be divided into three different stages: (1) users needs, (2) usability tests, and (3) final user field tests or user validation.

### ***Integration of *luriservice* in the court technology system***

*luriservice* was officially introduced in a formal session to members of the General Council of the Judiciary, representatives of the CENDOJ (Centro de Documentación Judicial), judges of the 58<sup>th</sup> class, and Directors of the Latin-American Judicial Schools who were present at that time at the Spanish School (November 27<sup>th</sup>, 2006).

On December 15<sup>th</sup>, 2005 the Plenary of the Spanish Judicial Council (CGPJ) issued an Order approving the extension until 2007 of the agreement on research between the CGPJ and the Autonomous University of Barcelona (UAB) (January 31<sup>st</sup>, 2001). The order states explicitly that researchers are under the restrictions on sensitive data established by the Spanish legislation (and art. 6 of the original agreement, concerning the confidentiality of judicial data). In addition, there is an agreement of research signed by the UAB, iSOCO, and La Ley-Actualidad S.A. (Wolters Kluwer) (2004). By virtue of this agreement, SEKT researchers have had access to the 450,000 judgments contained in La Ley legal database.

### ***Key Benefits of *luriservice****

- pragmatic management of professional knowledge relevant to judges in their daily work;
- promotion of consistency in judicial decisions through the accumulation of relevant knowledge;

- reduced response time for new judges to their first cases;
- knowledge management (recovery of questions and case law) based on “understanding” of context rather than specific words.

### PenalNet Plus<sup>1</sup>

Another relevant project is **PenalNet Plus**, a pilot project led by the General Council of Spanish Lawyers,<sup>2</sup> in the framework of the European E-Justice program. *PenalNet* will create an encrypted videoconferencing system between European lawyers, will allow improved interoperability studies and will facilitate the expansion of the network to a greater number of European bars and solicitors, always based on the secrecy of professionals’ communications and ensuring security in the EU legal sphere seamlessly and in an efficient way. It represents the first European network for secure and fluent e-communications intended for criminal lawyers.

*PenalNet* is an initiative supported and co-financed by the EU programme Criminal Justice 2007, (Directorate-General Justice Freedom and Security of the European Commission) and its development is currently undertaken by the *Consejo General de la Abogacía* (Spanish Bar) in cooperation with four partner Bars: the *Conseil National des Barreaux* (France), the *Magyar Ügyvédi Kamara* (Hungary) *Consiglio Nazionale Forense* (Italy), and *Uniunea Națională a Barourilor din România*, (Romania).

The use of *PenalNet* by a lawyer means providing a cost-effective solution to citizens and clients, by using modern communication means to fully protect privacy and developing a professional network to promote the right of defence in cross-border practice.

The system provides a directory of registered European criminal lawyers, which allows faster interaction and efficiency and increases confidence between the professionals and amongst clients/citizens, whilst protecting their right to privacy as well as their professional secrecy.

*PenalNet* provides also a reliable communication based on the use of digital certificates, the most secure way to validate professional identity on the Internet.

The certificate holder’s status as a lawyer is guaranteed by his/her national or regional bar association, which verifies his/her identity before issuing the certificate.

*PenalNet* digital certificates are issued in a CCBE’s (Council of Bars and the Law Society’s of Europe) European Lawyer Professional Identity Card, which uses the advanced digital signature, complying with the standards defined by the electronic signature Directive 1999/93/CE for Secure Signature Creation Devices.

<sup>1</sup> [www.penalnet.eu](http://www.penalnet.eu)

<sup>2</sup> CGAE: Consejo General de la Abogacía Española.

Electronic signature guarantees that the documents have not been amended during communication, which allows greater security in cross-border criminal processes in Europe. Digital signature makes the authorship of the messages sent and received unquestionable, which guarantees that the issuing party cannot refute them.

The messages sent and received through *PenalNet* are encrypted and cannot be tampered or modified in any way.

*PenalNet* platform provides confirmation of reception and a return receipt, and users can be notified of messages sent to them through the means they prefer.

Currently, the Bar Councils of *PenalNet* are selecting the lawyers who will participate in *PenalNet*. The next step of the project is to include *PenalNet* in the European e-Justice website as well as to enlarge *PenalNet* to other Member States.

The presentations on *PenalNet* will continue in the forthcoming months in events such as the seminar "Towards a European on-line Justice" that the Spanish Presidency of the EU and the European Commission organised recently (19-20 April 2011).

### **Legal Documentation Centre**

In 1997, the Governing Council of the Judiciary (*Consejo General del Poder Judicial*) created the *Centro de Documentación Judicial* (Legal Documentation Centre), CENDOJ, based in San Sebastián. The configuration of this new public service providing access to the case law produced in the various judicial bodies in the best possible technical conditions, as well as with special protection for people with regard to the handling of automated data, is based on the mandates and opinion generated by various plans, planning declarations of a political nature and rules generated in various spheres.

The database of the Official State Gazette, which contains information about constitutional case law, must be added to the CENDOJ database<sup>3</sup>.

There are also private databases, with restricted access in return for payment of a fee.

### **Presentation of case law**

Article 107 of the law LOPJ<sup>4</sup> states that the Governing Council of the Judiciary is responsible for the official publication of sentences and other decisions issued by the Supreme Court and other judicial bodies.

As regards the case law of the Supreme Court, CENDOJ has created a technological platform which is structured around a navigation system

---

<sup>3</sup> From Eu portal E-justice.

<sup>4</sup> "Ley Orgánica del Poder Judicial", Law of Judiciary.

based on tabs<sup>5</sup>. The searcher is able to access all court decisions of the Supreme Court quickly and securely. The search for decisions can be carried out by means of selection fields which identify or classify the said decisions, and/or by means of empty text fields. There is also the option of directly accessing the last 50 decisions of each court. In this way citizens are able to access the most recent decisions to have been received and incorporated into the database which constitutes the corpus of case law.

The sentences are usually available on the databases in PDF, RTM and HTML formats.

The case law of the Supreme Court is published in full online and free of charge to read. The full texts are available, with personal data removed and with an efficient search engine which works on the texts of all decisions. The CENDOJ database provides the public, also free of charge, with the orders and sentences issued by the “Audiencia Nacional” (National High Court), the “Tribunales Superiores de Justicia” (High Courts of Justice) and the “Audiencias Provinciales” (Provincial Courts).

There are also publication rules in the Regulation which creates the *Centro de Documentación Judicial* (legal documentation centre)<sup>6</sup>.

#### **Videoconferencing\*:**

Many courts in Member States are now equipped with videoconferencing facilities in the courtroom or in special hearing rooms for witnesses and experts.

### **3. ACCESS TO JUSTICE TO THE CITIZENS THROUGH THE E-TOOLS**

In this section, it is significant to mention the Law “25/2009” of 22th December, called the “Omnibus Law”, a law through which professional groups are enabled to provide services to citizens through internet.

#### **“Point of Single Contact”**

The European Services Directive and the “*Ley Omnibus*”, amending the Bar Association Act, require these groups to lend their services to citizens through the “Point of Single Contact” or “*Ventanilla Unica de la Abogacía*”, a website where citizens can find information regarding the profession and carry out actions.

<sup>5</sup> <http://www.poderjudicial.es/search/index.jsp>

<sup>6</sup> From Eu portal E-justice.

\* For detailed information see the document attached “Videoconferencing-facilities Spain”



The *Ventanilla Única de la Abogacía* is available at [www.ventanillaunicaabogados.org](http://www.ventanillaunicaabogados.org), a website that the Spanish Bar has developed in collaboration with 83 Spanish regional Bars in order to comply with the obligations contained in Laws 17/2009 of 23 November 2009 regarding free access to the service activities and their execution, and 25/2009 of 22 December 2009 (*"Ley Omnibus"*).

The service of this portal is integrated with *Ventanilla Única* for the Ministry of the President, [www.eugo.es](http://www.eugo.es), allowing any citizen to access this portal and continue the procedure form of the selected profession.

The portal is aimed at lawyers or citizens who wish to obtain information or carry out procedures related to the bars, mainly those citizens who are interested in finding information related to the functioning of the bars (check annual reports or code of ethics, boards' calendar). It is also aimed at those bar associates and clients interested in making a claim or complaint against a lawyer or another bar associate.

The public may access information freely, but in order to carry out formalities and actions they need new electronic identity document, digital certificate and verification code to proceedings initiated on other public administration sites as [www.eugo.es](http://www.eugo.es), the website of the Ministry of Presidency.

This project is promoted by the General Council of Spanish Lawyers (*Consejo General de la Abogacía española*) through the web site [www.redabogacia.org](http://www.redabogacia.org).

### **Electronic file for access to legal aid**

In 2010, the Spanish lawyers' associations processed over 200,000 electronic files of Legal Aid (*Justicia Gratuita*), in more than 50 bar associations that are using the system developed by the Infrastructure Technology General Council of Spanish Lawyers (*Consejo General de la Abogacía Española*).

The electronic processing service records turnaround times for document management requirements by up to 40 days, automatically collecting data to justify the right to legal aid, preventing citizens to have to personally obtain them from the different authorities involved, eliminating hassles and also minimising the errors of the administrative record.

With this service, Spanish lawyers' associations strengthen their role in the "e-Government", focusing their efforts on a better public service for citizens.

The system offers the bars an easy way of electronic access to institutions like the Tax Office, the National Treasury and Social Security, the Land Registry or the National Employment Institute.

The initiative to create the service "Electronic File Legal Aid" (*Expediente Electrónico de Justicia Gratuita*) is framed in the context of modernisation

of the Spanish bar based on its commitment to provide the best service to society.

To achieve this, the CGAE (*Consejo General de la Abogacía Española*) has developed, through its Technology Project, pioneering initiatives such as the Certification Authority of Spanish lawyers' associations, the Intranet Services for bar associated services, the e-school or Single Window, among others.

### **Agreement with Presidency**

In its public duties, the Bar has been entrusted to guarantee the right of defence, referred to in Article 24 of the Spanish Constitution, and the management of Legal Aid, through Act 1/96 of January 10.

In 2010, it signed a technological cooperation agreement between the Legal Aid Department of the Presidency and the General Council of Spanish Lawyers by which the Legal Aid Commissions of the regions that have not yet transferred the responsibility for Justice, may use the electronic record of CGAE Legal Aid to shorten the processing and tackle them in a "leaner, safer and faster" way.



## ANNEX 1. SOME STATISTICS

The following tables indicate the use of services “RedAbogacía” in 2010, the important network of Spanish lawyers serving the public and lawyers.

As the tables indicate, the tendency to use the extranet for lawyers’ services has increased from its commissioning in June 2004.

The first table marks the historic sessions in 2006 – 2010 of [www.redabogacia.org](http://www.redabogacia.org). The increase in 2010 regarding the number of sessions is over 20% compared to the same period last year.

The month with most sessions was November 2010 with a total of 112,711 visits (as shown in the box below left).

Table number 3 (bottom right) shows the status of implementation of the electronic signature. Today, all Bar Associations (except Madrid) are part of the “Certification Authority” of the Lawyers, to which they have distributed more than 100,000 cards college since 2004.

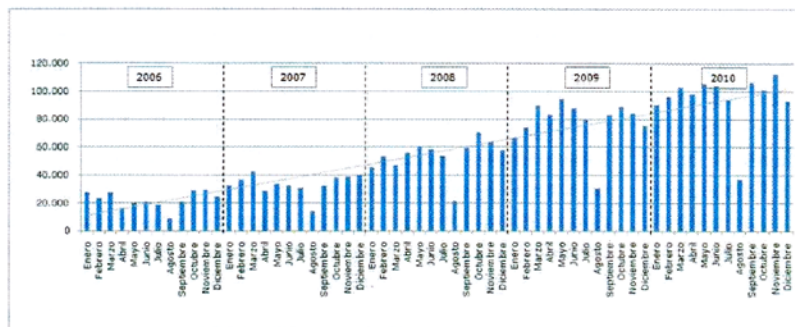
## USO DE SERVICIOS **REDABOGACÍA 2010**

La tendencia de uso de la Extranet de Servicios de la Abogacía se va incrementando desde su puesta en servicio en Junio-04.

### Histórico 2006-2010 - sesiones en [www.redabogacia.org](http://www.redabogacia.org)

El incremento en el 2010 en cuanto al número de sesiones es de más de un 20% respecto del mismo periodo del año anterior.

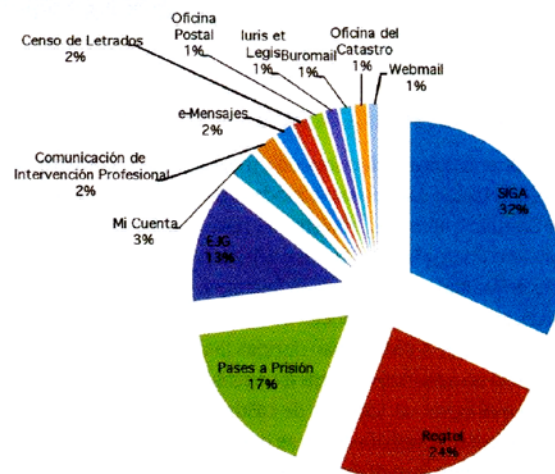
### Expedientes Electrónicos de Justicia Gratuita tramitados (2006-2010)



El mes con **más sesiones** fue el de **noviembre**, que alcanzó un total de **112.711**, un 34% más que el mismo periodo del año 2009.

Sesiones RedAbogacía	2009	2010	Incremento
Enero	66.673	90.392	36%
Febrero	74.004	96.165	30%
Marzo	89.921	102.785	14%
Abril	83.393	98.305	18%
Mayo	94.453	105.350	12%
Junio	87.613	103.772	18%
Julio	79.899	94.065	18%
Agosto	30.663	37.252	21%
Septiembre	83.233	106.423	28%
Octubre	89.056	101.153	14%
Noviembre	84.248	112.711	34%
Diciembre	75.494	92.840	23%
	938.650	1.141.213	22%

### Servicios con más accesos



### Estado de implantación Firma Electrónica

En la actualidad todos los Colegios (salvo Madrid) forman parte de la Autoridad de Certificación de la Abogacía, a los que se les han distribuido más de 100.000 carnés colegiales electrónicos desde el 2004.

## ANNEX 2. INFORMATION ON THE VIDEOCONFERENCING EQUIPMENT IN THE COURTS OF SPAIN

No	City	Community	Province	Court name	Encryption possible YES/NO	Equipment type and make	Multipoint connection possible YES/NO	ISDN or IP	Speed (kbps)	Protocols and standards used	Number of cameras	Number of screens
1	Albacete	Castilla La Mancha	Albacete	Audiencia Provincial	YES	SONY PCS-1600P	NO	ISDN H320	384	H261, H263+ G711, G722, G728, G723	1	1
2	Albacete	Castilla La Mancha	Albacete	Audiencia Provincial (Fiscalía)	YES	SONY PCS-1600P	NO	ISDN H320	384	H261, H263+ G711, G722, G728, G723	1	1
3	Albacete	Castilla La Mancha	Albacete	Audiencia Provincial Civil y Penal	YES	SONY PCS-1600P	NO	ISDN H320	384	H261, H263+ G711, G722, G728, G723	1	1
4	Albacete	Castilla La Mancha	Albacete	Audiencia Provincial Civil y Penal	YES	SONY PCS-1600P	NO	ISDN H320	384	H261, H263+ G711, G722, G728, G723	1	1
5	Albacete	Castilla La Mancha	Albacete	Juzgado de lo Penal	YES	SONY PCS-1600P	NO	ISDN H320	384	H261, H263+ G711, G722, G728, G723	1	1
6	Albacete	Castilla La Mancha	Albacete	Juzgado de Primera Instancia	YES	SONY PCS-1600P	NO	ISDN H320	384	H261, H263+ G711, G722, G728, G723	1	1
7	Albacete	Castilla La Mancha	Albacete	Juzgado de Primera Instancia	YES	TANDBERG 550 MXP	NO	ISDN H320	384	H261, H262, H263, H263+, HDS4; G711, G722, G722.1, G728	1	1
8	Albacete	Castilla La Mancha	Albacete	Juzgado de Primera Instancia	YES	TANDBERG 550 MXP	NO	ISDN H320	384	H261, H262, H263, H263+, HDS4; G711, G722, G722.1, G728	1	1
9	Albacete	Castilla La Mancha	Albacete	Tribunal Superior de Justicia	YES	SONY PCS-1600P	NO	ISDN H320	384	H261, H263+ G711, G722, G728, G723	1	1
10	Alcaraz	Alcaraz	Albacete	Juzgado de Primera Instancia e Instrucción	NO	FALCON	NO	ISDN H320	384	H261, H263+ G711, G722, G728, G723	1	1
11	Alcazar de San Juan	Castilla La Mancha	Ciudad Real	Juzgado de Primera Instancia e Instrucción	NO	FALCON	NO	ISDN H320	384	H261, H263+ G711, G722, G728, G723	1	1
12	Almadén	Castilla La Mancha	Ciudad Real	Juzgado de Primera Instancia e Instrucción	NO	FALCON	NO	ISDN H320	384	H261, H263+ G711, G722, G728, G723	1	1
13	Almagro	Castilla La Mancha	Ciudad Real	Juzgado de Primera Instancia e Instrucción	YES	TANDBERG 550 MXP	NO	ISDN H320	384	H261, H262, H263, H263+, HDS4; G711, G722, G722.1, G728	1	1

No	City	Community	Province	Court name	Encryption possible YES/NO	Equipment type and make	Multipoint connection possible YES/NO	ISDN or IP	Speed (kbps)	Protocols and standards used	Number of cameras	Number of screens
14	Almansa	Castilla La Mancha	Albacete	Juzgado de Primera Instancia e Instrucción	NO	FALCON	NO	ISDN H320	384	H261, H263+ G711, G722, G728, G723	1	1
15	Almazan	Castilla y León	Soria	Juzgado de Primera Instancia e Instrucción	YES	SONY PCS-1600P	NO	ISDN H320	384	H261, H263+ G711, G722, G728, G723	1	1
16	Aranda de Due-ro	Castilla y León	Burgos	Juzgado de Primera Instancia e Instrucción	NO	FALCON	NO	ISDN H320	384	H261, H263+ G711, G722, G728, G723	1	1
17	Arenas de S Pedro	Castilla y León	Avila	Juzgado de Primera Instancia e Instrucción	NO	FALCON	NO	ISDN H320	384	H261, H263+ G711, G722, G728, G723	1	1
18	Arévalo	Castilla y León	Avila	Juzgado de Primera Instancia e Instrucción	YES	TAND-BERG 550 MXP	NO	ISDN H320	384	H261, H262, H263+, HDS4; G711, G722, G722.1, G728	1	1
19	Astorga	Castilla y León	León	Juzgado de Primera Instancia e Instrucción	YES	SONY PCS-1600P	NO	ISDN H320	384	H261, H263+ G711, G722, G728, G723	1	1
20	Avila	Castilla y León	Avila	Audiencia Provincial Civil	YES	SONY PCS-1600P	NO	ISDN H320	384	H261, H263+ G711, G722, G728, G723	1	1
21	Avila	Castilla y León	Avila	Juzgado de lo Penal	YES	SONY PCS-1600P	NO	ISDN H320	384	H261, H263+ G711, G722, G728, G723	1	1
22	Avila	Castilla y León	Avila	Juzgado de Primera Instancia e Instrucción/ Juzgado de lo Penal/ Juzgado de lo Social/ Juzgado de lo Contencioso Administrativo/ Juzgado de MeNIEres	YES	TAND-BERG 550 MXP	NO	ISDN H320	384	H261, H262, H263, H263+, HDS4; G711, G722, G722.1, G728	1	1
23	Badajoz	Extremadura	Badajoz	Audiencia Provincial Civil	YES	SONY PCS-1600P	NO	ISDN H320	384	H261, H263+ G711, G722, G728, G723	1	1
24	Badajoz	Extremadura	Badajoz	Juzgado de lo Penal	YES	TAND-BERG 550 MXP	NO	ISDN H320	384	H261, H262, H263, H263+, HDS4; G711, G722, G722.1, G728	1	1
25	Badajoz	Extremadura	Badajoz	Tribunal Superior de Justicia (Fiscalía)	YES	SONY PCS-1600P	NO	ISDN H320	384	H261, H263+ G711, G722, G728, G723	1	1

No	City	Communi-ty	Province	Court name	Encryp- tion possible YES/NO	Equipment type and make	Multipoint connection possible YES/NO	ISDN or IP	Speed (kbps)	Protocols and standards used	Num- ber of cam- eras	Num- ber of screens
26	Béjar	Castilla y León	Salaman- ca	Juzgado de Primera Instancia e Instrucción	NO	FALCON	NO	ISDN H320	384	H261, H263+ G711, G722, G728, G723	1	1
27	Be- navente	Castilla y León	Zamora	Juzgado de Primera Instancia e Instrucción	NO	FALCON	NO	ISDN H320	384	H261, H263+ G711, G722, G728, G723	1	1
28	Be- navente	Castilla y León	Zamora	Juzgado de Primera Instancia e Instrucción	YES	SONY PCS-1600P	NO	ISDN H320	384	H261, H263+ G711, G722, G728, G723	1	1
29	Briviesca	Castilla y León	Burgos	Juzgado de Primera Instancia e Instrucción	NO	FALCON	NO	ISDN H320	384	H261, H263+ G711, G722, G728, G723	1	1
30	Bur- go de Osma	Castilla y León	Soria	Juzgado de Primera Instancia e Instrucción	YES	SONY PCS-1600P	NO	ISDN H320	384	H261, H263+ G711, G722, G728, G723	1	1
31	Burgos	Castilla y León	Burgos	Juzgado de Primera Instancia	YES	TAND- BERG 550 MXP	NO	ISDN H320	384	H261, H262, H263, H263+, HDS4; G711, G722, G722.1, G728	1	1
32	Burgos	Castilla y León	Burgos	Todos los Juzgados de Primera Instancia e Instrucción	YES	TAND- BERG 550 MXP	NO	ISDN H320	384	H261, H262, H263, H263+, HDS4; G711, G722, G722.1, G728	1	1
33	Burgos	Castilla y León	Burgos	Todos los Juzgados de Primera Instancia e Instrucción	YES	TAND- BERG 550 MXP	NO	ISDN H320	384	H261, H262, H263, H263+, HDS4; G711, G722, G722.1, G728	1	1
34	Burgos	Castilla y León	Burgos	Tribunal Superior de Justicia	YES	SONY PCS-1600P	NO	ISDN H320	384	H261, H263+ G711, G722, G728, G723	1	1
35	Burgos	Castilla y León	Burgos	Tribunal Superior de Justicia (Fiscalía)	YES	SONY PCS-1600P	NO	ISDN H320	384	H261, H263+ G711, G722, G728, G723	1	1
36	Burgos	Castilla y León	Burgos	Tribunal Superior de Justicia/ Audiencia Provincial	YES	SONY PCS-1600P	NO	ISDN H320	384	H261, H263+ G711, G722, G728, G723	1	1
37	Cáceres	Extrema- dura	Cáceres	Audiencia Provincial Civil	YES	SONY PCS-1600P	NO	ISDN H320	384	H261, H263+ G711, G722, G728, G723	1	1
38	Cáceres	Extrema- dura	Cáceres	Audiencia Provincial Civil (Fiscalía)	YES	SONY PCS-1600P	NO	ISDN H320	384	H261, H263+ G711, G722, G728, G723	1	1

No	City	Community	Province	Court name	Encryption possible YES/NO	Equipment type and make	Multipoint connection possible YES/NO	ISDN or IP	Speed (kbps)	Protocols and standards used	Number of cameras	Number of screens
39	Cáceres	Extremadura	Cáceres	Juzgado de lo Contencioso Administrativo	YES	SONY PCS-1600P	NO	ISDN H320	384	H261, H263+ G711, G722, G728, G723	1	1
40	Cáceres	Extremadura	Cáceres	Juzgado de lo Penal	YES	SONY PCS-1600P	NO	ISDN H320	384	H261, H262, H263, H263+, HDS4; G711, G722, G722.1, G728	1	1
41	Cáceres	Extremadura	Cáceres	Tribunal Superior de Justicia	YES	SONY PCS-1600P	NO	ISDN H320	384	H261, H263+ G711, G722, G728, G723	1	1
42	Calahorra	La Rioja	La Rioja	Juzgado de Primera Instancia e Instrucción	YES	TANDBERG 550 MXP	NO	ISDN H320	384	H261, H262, H263, H263+, HDS4; G711, G722, G722.1, G728	1	1
43	Caravaca	Murcia	Murcia	Juzgado de Primera Instancia e Instrucción	YES	TANDBERG 550 MXP	NO	ISDN H320	384	H261, H262, H263, H263+, HDS4; G711, G722, G722.1, G728	1	1
44	Caravaca	Murcia	Murcia	Juzgado de Primera Instancia e Instrucción	YES	TANDBERG 550 MXP	NO	ISDN H320	384	H261, H262, H263, H263+, HDS4; G711, G722, G722.1, G728	1	1
45	Carrión de los Condes	Castilla y León	Palencia	Juzgado de Primera Instancia e Instrucción	NO	FALCON	NO	ISDN H320	384	H261, H263+ G711, G722, G728, G723	1	1
46	Cartagena	Murcia	Murcia	Audiencia Provincial Civil y Penal	YES	SONY PCS-1600P	NO	ISDN H320	384	H261, H263+ G711, G722, G728, G723	1	1
47	Cartagena	Murcia	Murcia	Tribunal Superior de Justicia de Murcia (Decanato)	YES	SONY PCS-1600P	NO	ISDN H320	384	H261, H263+ G711, G722, G728, G723	1	1
48	Cartagena	Murcia	Murcia	Tribunal Superior de Justicia de Murcia (Fiscalía)	YES	SONY PCS-1600P	NO	ISDN H320	384	H261, H263+ G711, G722, G728, G723	1	1
49	Casas-Ibañez	Castilla La Mancha	Albacete	Juzgado de Primera Instancia e Instrucción	YES	TANDBERG 550 MXP	NO	ISDN H320	384	H261, H262, H263, H263+, HDS4; G711, G722, G722.1, G728	1	1
50	Cervera de Pisuerga	Castilla y León	Palencia	Juzgado de Primera Instancia	NO	FALCON	NO	ISDN H320	384	H261, H263+ G711, G722, G728, G723	1	1
51	Ceuta	Ciudad de Ceuta	Ceuta	Audiencia Provincial Civil	YES	SONY PCS-1600P	NO	ISDN H320	384	H261, H263+ G711, G722, G728, G723	1	1

No	City	Community	Province	Court name	Encryption possible YES/NO	Equipment type and make	Multipoint connection possible YES/NO	ISDN or IP	Speed (kbps)	Protocols and standards used	Number of cameras	Number of screens
52	Ceuta	Ciudad de Ceuta	Ceuta	Juzgado de lo Penal	YES	SONY PCS-1600P	NO	ISDN H320	384	H261, H263+ G711, G722, G728, G723	1	1
53	Cieza	Murcia	Murcia	Juzgado de Primera Instancia e Instrucción	YES	TAND-BERG 550 MXP	NO	ISDN H320	384	H261, H262, H263, H263+, HDS4; G711, G722, G722.1, G728	1	1
54	Cistierna	Castilla y León	León	Juzgado de Primera Instancia e Instrucción	NO	FALCON	NO	ISDN H320	384	H261, H263+ G711, G722, G728, G723	1	1
55	Ciudad Real	Castilla La Mancha	Ciudad Real	Audiencia Provincial Civil y Penal	YES	SONY PCS-1600P	NO	ISDN H320	384	H261, H263+ G711, G722, G728, G723	1	1
56	Ciudad Real	Castilla La Mancha	Ciudad Real	Fiscalía (Audiencia Provincial)	YES	SONY PCS-1600P	NO	ISDN H320	384	H261, H263+ G711, G722, G728, G723	1	1
57	Ciudad Real	Castilla La Mancha	Ciudad Real	Fiscalía (Audiencia Provincial)	YES	SONY PCS-1600P	NO	ISDN H320	384	H261, H263+ G711, G722, G728, G723	1	1
58	Ciudad Real	Castilla La Mancha	Ciudad Real	Juzgado de lo Penal	YES	SONY PCS-1600P	NO	ISDN H320	384	H261, H263+ G711, G722, G728, G723	1	1
59	Ciudad Real	Castilla La Mancha	Ciudad Real	Juzgado de lo Penal	YES	SONY PCS-1600P	NO	ISDN H320	384	H261, H263+ G711, G722, G728, G723	1	1
60	Ciudad Rodrigo	Castilla y León	Salamanca	Juzgado de Primera Instancia e Instrucción	NO	FALCON	NO	ISDN H320	384	H261, H263+ G711, G722, G728, G723	1	1
61	Coria	Extremadura	Cáceres	Juzgado de Primera Instancia e Instrucción	YES	TAND-BERG 550 MXP	NO	ISDN H320	384	H261, H262, H263, H263+, HDS4; G711, G722, G722.1, G728	1	1
62	Cuellar	Castilla y León	Segovia	Juzgado de Primera Instancia e Instrucción	YES	FALCON	NO	ISDN H320	384	H261, H263+ G711, G722, G728, G723	1	1
63	Cuenca	Castilla La Mancha	Cuenca	Audiencia Provincial Civil y Penal	YES	SONY PCS-1600P	NO	ISDN H320	384	H261, H263+ G711, G722, G728, G723	1	1
64	Cuenca	Castilla La Mancha	Cuenca	Fiscalía (Audiencia Provincial)	YES	SONY PCS-1600P	NO	ISDN H320	384	H261, H263+ G711, G722, G728, G723	1	1
65	Cuenca	Castilla La Mancha	Cuenca	Juzgado de lo Penal	YES	TAND-BERG 550 MXP	NO	ISDN H320	384	H261, H262, H263, H263+, HDS4; G711, G722, G722.1, G728	1	1
66	Daimiel	Castilla La Mancha	Ciudad Real	Juzgado de Primera Instancia e Instrucción	YES	TAND-BERG 550 MXP	NO	ISDN H320	384	H261, H262, H263, H263+, HDS4; G711, G722, G722.1, G728	1	1



No	City	Community	Province	Court name	Encryption possible YES/NO	Equipment type and make	Multipoint connection possible YES/NO	ISDN or IP	Speed (kbps)	Protocols and standards used	Number of cameras	Number of screens
67	Don Benito	Extremadura	Badajoz	Juzgado de lo Penal	YES	TAND-BERG 550 MXP	NO	ISDN H320	384	H261, H262, H263, H263+, HDS4; G711, G722, G722.1, G728	1	1
68	Guadalajara	Castilla La Mancha	Guadalajara	Audiencia Provincial Civil y Penal	NO	FALCON	NO	ISDN H320	384	H261, H263+ G711, G722, G728, G723	1	1
69	Guadalajara	Castilla La Mancha	Guadalajara	Juzgado de Primera Instancia e Instrucción	YES	SONY PCS-1600P	NO	ISDN H320	384	H261, H263+ G711, G722, G728, G723	1	1
70	Haro	La Rioja	La Rioja	Juzgado de Primera Instancia e Instrucción	YES	TAND-BERG 550 MXP	NO	ISDN H320	384	H261, H262, H263, H263+, HDS4; G711, G722, G722.1, G728	1	1
71	Hellín	Castilla La Mancha	Albacete	Juzgado de Primera Instancia e Instrucción	NO	FALCON	NO	ISDN H320	384	H261, H263+ G711, G722, G728, G723	1	1
72	Herrera del Duque	Extremadura	Badajoz	Juzgado de Primera Instancia e Instrucción	YES	TAND-BERG 550 MXP	NO	ISDN H320	384	H261, H262, H263, H263+, HDS4; G711, G722, G722.1, G728	1	1
73	Ibiza	Islas Baleares	Islas Baleares	Fiscalía de Ibiza	YES	SONY PCS-1600P	NO	ISDN H320	384	H261, H263+ G711, G722, G728, G723	1	1
74	Ibiza	Islas Baleares	Islas Baleares	Juzgado de Instrucción/ Juzgado de lo Penal	YES	SONY PCS-1600P	NO	ISDN H320	384	H261, H263+ G711, G722, G728, G723	1	1
75	Ibiza	Islas Baleares	Islas Baleares	Juzgado de Instrucción/ Juzgado de lo Penal	YES	SONY PCS-1600P	NO	ISDN H320	384	H261, H263+ G711, G722, G728, G723	1	1
76	Ibiza	Islas Baleares	Islas Baleares	Juzgado de Primera Instancia	YES	TAND-BERG 550 MXP	NO	ISDN H320	384	H261, H262, H263, H263+, HDS4; G711, G722, G722.1, G728	1	1
77	Illescas	Castilla La Mancha	Toledo	Juzgado de Primera Instancia e Instrucción	YES	TAND-BERG 550 MXP	NO	ISDN H320	384	H261, H262, H263, H263+, HDS4; G711, G722, G722.1, G728	1	1
78	Jumilla	Murcia	Murcia	Juzgado de Primera Instancia e Instrucción	YES	TAND-BERG 550 MXP	NO	ISDN H320	384	H261, H262, H263, H263+, HDS4; G711, G722, G722.1, G728	1	1
79	La Bañeza	Castilla y León	León	Juzgado de Primera Instancia e Instrucción	YES	SONY PCS-1600P	NO	ISDN H320	384	H261, H263+ G711, G722, G728, G723	1	1

No	City	Community	Province	Court name	Encryption possible YES/NO	Equipment type and make	Multipoint connection possible YES/NO	ISDN or IP	Speed (kbps)	Protocols and standards used	Number of cameras	Number of screens
80	La Roda	Castilla La Mancha	Albacete	Juzgado de Primera Instancia e Instrucción	YES	TAND-BERG 550 MXP	NO	ISDN H320	384	H261, H262, H263, H263+, HDS4; G711, G722, G722.1, G728	1	1
81	León	Castilla y León	León	Audiencia Provincial (Fiscalía)	YES	TAND-BERG 550 MXP	NO	ISDN H320	384	H261, H262, H263, H263+, HDS4; G711, G722, G722.1, G728	1	1
82	León	Castilla y León	León	Audiencia Provincial Civil	YES	SONY PCS-1600P	NO	ISDN H320	384	H261, H263+ G711, G722, G728, G723	1	1
83	León	Castilla y León	León	Fiscalía-Juzgados de Primera Instancia e Instrucción	YES	SONY PCS-1600P	NO	ISDN H320	384	H261, H263+ G711, G722, G728, G723	1	1
84	León	Castilla y León	León	Forenses-Juzgados de Primera Instancia e Instrucción	YES	SONY PCS-1600P	NO	ISDN H320	384	H261, H263+ G711, G722, G728, G723	1	1
85	León	Castilla y León	León	Juzgado de lo Penal	YES	TAND-BERG 550 MXP	NO	ISDN H320	384	H261, H262, H263, H263+, HDS4; G711, G722, G722.1, G728	1	1
86	León	Castilla y León	León	Juzgado de Primera Instancia	YES	TAND-BERG 550 MXP	NO	ISDN H320	384	H261, H262, H263, H263+, HDS4; G711, G722, G722.1, G728	1	1
87	León	Castilla y León	León	Juzgados de Primera Instancia e Instrucción	YES	SONY PCS-1600P	NO	ISDN H320	384	H261, H263+ G711, G722, G728, G723	1	1
88	Lerma	Castilla y León	Burgos	Juzgado de Primera Instancia e Instrucción	NO	FALCON	NO	ISDN H320	384	H261, H263+ G711, G722, G728, G723	1	1
89	Logroño	La Rioja	La Rioja	Audiencia Provincial (Fiscalía)	YES	SONY PCS-1600P	NO	ISDN H320	384	H261, H263+ G711, G722, G728, G723	1	1
90	Logroño	La Rioja	La Rioja	Audiencia Provincial Civil – Penal	YES	SONY PCS-1600P	NO	ISDN H320	384	H261, H263+ G711, G722, G728, G723	1	1
91	Logroño	La Rioja	La Rioja	Audiencia Provincial Civil – Penal	YES	SONY PCS-1600P	NO	ISDN H320	384	H261, H263+ G711, G722, G728, G723	1	1
92	Logroño	La Rioja	La Rioja	Tribunal Superior de Justicia Civil	YES	SONY PCS-1600P	NO	ISDN H320	384	H261, H263+ G711, G722, G728, G723	1	1

No	City	Community	Province	Court name	Encryption possible YES/NO	Equipment type and make	Multipoint connection possible YES/NO	ISDN or IP	Speed (kbps)	Protocols and standards used	Number of cameras	Number of screens
93	Lorca	Murcia	Murcia	Juzgado de lo Penal	YES	TAND-BERG 550 MXP	NO	ISDN H320	384	H261, H262, H263, H263+, HDS4; G711, G722, G722.1, G728	1	1
94	Lorca	Murcia	Murcia	Juzgado de lo Penal	YES	TAND-BERG 550 MXP	NO	ISDN H320	384	H261, H262, H263, H263+, HDS4; G711, G722, G722.1, G728	1	1
95	Lorca	Murcia	Murcia	Juzgado de Primera Instancia e Instrucción	YES	TAND-BERG 550 MXP	NO	ISDN H320	384	H261, H262, H263, H263+, HDS4; G711, G722, G722.1, G728	1	1
96	Madrid	Madrid	Madrid	Audiencia Nacional	YES	TAND-BERG 550 MXP	NO	IP H.323		H261, H262, H263, H263+, HDS4; G711, G722, G722.1, G728	1	1
97	Madrid	Madrid	Madrid	Audiencia Nacional	YES	TAND-BERG 550 MXP	NO	IP H.323		H261, H262, H263, H263+, HDS4; G711, G722, G722.1, G728	1	1
98	Madrid	Madrid	Madrid	Audiencia Nacional	YES	TAND-BERG 550 MXP	NO	IP H.323		H261, H262, H263, H263+, HDS4; G711, G722, G722.1, G728	1	1
99	Madrid	Madrid	Madrid	Audiencia Nacional	YES	TAND-BERG 550 MXP	NO	IP H.323		H261, H262, H263, H263+, HDS4; G711, G722, G722.1, G728	1	1
100	Madrid	Madrid	Madrid	Audiencia Nacional	YES	TAND-BERG 550 MXP	NO	IP H.323		H261, H262, H263, H263+, HDS4; G711, G722, G722.1, G728	1	1
101	Madrid	Madrid	Madrid	Audiencia Nacional	YES	TAND-BERG 3000 MXP	NO	ISDN H320	384	H261, H262, H263, H263+, HDS4; G711, G722, G722.1, G728	1	1
102	Madrid	Madrid	Madrid	Audiencia Nacional	YES	TAND-BERG 3000 MXP	NO	ISDN H320	384	H261, H262, H263, H263+, HDS4; G711, G722, G722.1, G728	1	1
103	Madrid	Madrid	Madrid	Fiscalía General del Estado	YES	SONY PCS-1600P	NO	ISDN H320	384	H261, H263+ G711, G722, G728, G723	1	1

No	City	Communi-ty	Province	Court name	Encryption possible YES/NO	Equipment type and make	Multipoint connection possible YES/NO	ISDN or IP	Speed (kbps)	Protocols and standards used	Number of cameras	Number of screens
104	Madrid	Madrid	Madrid	Juzgado Central de Instrucción	YES	TAND-BERG 550 MXP	NO	IP H.323		H261, H262, H263, H263+, HDS4; G711, G722, G722.1, G728	1	1
105	Madrid	Madrid	Madrid	Juzgado Central de Instrucción	YES	TAND-BERG 550 MXP	NO	IP H.323		H261, H262, H263, H263+, HDS4; G711, G722, G722.1, G728	1	1
106	Madrid	Madrid	Madrid	Juzgado Central de lo Contencioso Administrativo	YES	SONY PCS-1600P	NO	ISDN H320	384	H261, H263+ G711, G722, G728, G723	1	1
107	Madrid	Madrid	Madrid	Juzgado Central de lo Contencioso Administrativo	YES	SONY PCS-1600P	NO	ISDN H320	384	H261, H263+ G711, G722, G728, G723	1	1
108	Madrid	Madrid	Madrid	Juzgado Central de lo Contencioso Administrativo	YES	TAND-BERG 550 MXP	NO	ISDN H320	384	H261, H262, H263, H263+, HDS4; G711, G722, G722.1, G728	1	1
137	Palma Mallorca	Islas Baleares	Islas Baleares	Fiscalía de Palma de Mallorca	YES	SONY PCS-1600P	NO	ISDN H320	384	H261, H263+ G711, G722, G728, G723	1	1
138	Palma Mallorca	Islas Baleares	Islas Baleares	Juzgado de Instrucción/ Juzgado de lo Penal	YES	TAND-BERG 550 MXP	NO	ISDN H320	384	H261, H262, H263, H263+, HDS4; G711, G722, G722.1, G728	1	1
139	Palma Mallorca	Islas Baleares	Islas Baleares	Juzgado de Instrucción/ Juzgado de lo Penal	YES	TAND-BERG 550 MXP	NO	ISDN H320	384	H261, H262, H263, H263+, HDS4; G711, G722, G722.1, G728	1	1
140	Palma Mallorca	Islas Baleares	Islas Baleares	Juzgado de Instrucción/ Juzgado de lo Penal	YES	SONY PCS-1600P	NO	ISDN H320	384	H261, H263+ G711, G722, G728, G723	1	1
141	Palma Mallorca	Islas Baleares	Islas Baleares	Juzgado de Primera Instancia	YES	SONY PCS-1600P	NO	ISDN H320	384	H261, H263+ G711, G722, G728, G723	1	1
142	Palma Mallorca	Islas Baleares	Islas Baleares	Juzgado lo de Penal	YES	SONY PCS-1600P	NO	ISDN H320	384	H261, H263+ G711, G722, G728, G723	1	1
143	Palma Mallorca	Islas Baleares	Islas Baleares	Tribunal Superior de Justicia Civil& Social/ Audiencia Provincial Civil	YES	SONY PCS-1600P	NO	ISDN H320	384	H261, H263+ G711, G722, G728, G723	1	1

No	City	Community	Province	Court name	Encryption possible YES/NO	Equipment type and make	Multipoint connection possible YES/NO	ISDN or IP	Speed (kbps)	Protocols and standards used	Number of cameras	Number of screens
144	Peñaranda de Bracamonte	Castilla y León	Salamanca	Juzgado de Primera Instancia e Instrucción	YES	TANDBERG 550 MXP	NO	ISDN H320	384	H261, H262, H263, H263+, HDS4; G711, G722, G722.1, G728	1	1
145	Piedrahíta	Castilla y León	Ávila	Juzgado de Primera Instancia e Instrucción	NO	FALCON	NO	ISDN H320	384	H261, H263+ G711, G722, G728, G723	1	1
146	Plasencia	Extremadura	Cáceres	Juzgado de Primera Instancia e Instrucción	NO	FALCON	NO	ISDN H320	384	H261, H263+ G711, G722, G728, G723	1	1
147	Ponferrada	Castilla y León	León	Adscripción Permanente (Fiscalía)	NO	FALCON	NO	ISDN H320	384	H261, H263+ G711, G722, G728, G723	1	1
148	Puebla de Sanabria	Castilla y León	Zamora	Juzgado de Primera Instancia e Instrucción	NO	FALCON	NO	ISDN H320	384	H261, H263+ G711, G722, G728, G723	1	1
149	Puerto Iñigo	Castilla La Mancha	Ciudad Real	Juzgado de Primera Instancia e Instrucción	YES	TANDBERG 550 MXP	NO	ISDN H320	384	H261, H262, H263, H263+, HDS4; G711, G722, G722.1, G728	1	1
150	Quintanar	Castilla La Mancha	Toledo	Juzgado de Primera Instancia e Instrucción	NO	FALCON	NO	ISDN H320	384	H261, H263+ G711, G722, G728, G723	1	1
151	S <sup>a</sup> María Real de Nieva	Castilla y León	Segovia	Juzgado de Primera Instancia e Instrucción	YES	TANDBERG 550 MXP	NO	ISDN H320	384	H261, H262, H263, H263+, HDS4; G711, G722, G722.1, G728	1	1
152	Sahagún	Castilla y León	León	Juzgado de Primera Instancia e Instrucción	NO	FALCON	NO	ISDN H320	384	H261, H263+ G711, G722, G728, G723	1	1
153	Salamanca	Castilla y León	Salamanca	Audiencia Provincial Civil	NO	TANDBERG 550 MXP	NO	ISDN H320	384	H261, H262, H263, H263+, HDS4; G711, G722, G722.1, G728	1	1
154	Salamanca	Castilla y León	Salamanca	Juzgado de Primera Instancia (Fiscalía)	YES	SONY PCS-1600P	NO	ISDN H320	384	H261, H263+ G711, G722, G728, G723	1	1
155	Salamanca	Castilla y León	Salamanca	Juzgado de Primera Instancia	YES	TANDBERG 550 MXP	NO	ISDN H320	384	H261, H262, H263, H263+, HDS4; G711, G722, G722.1, G728	1	1
156	Salamanca	Castilla y León	Salamanca	Juzgado de Primera Instancia	YES	TANDBERG 550 MXP	NO	ISDN H320	384	H261, H262, H263, H263+, HDS4; G711, G722, G722.1, G728	1	1

No	City	Community	Province	Court name	Encryption possible YES/NO	Equipment type and make	Multipoint connection possible YES/NO	ISDN or IP	Speed (kbps)	Protocols and standards used	Number of cameras	Number of screens
157	Salamanca	Castilla y León	Salamanca	Juzgado lo de Penal	YES	TAND-BERG 550 MXP	NO	ISDN H320	384	H261, H262, H263, H263+, HDS4; G711, G722, G722.1, G728	1	1
158	Salamanca	Castilla y León	Salamanca	Juzgados de Primera Instancia e Instrucción	YES	TAND-BERG 550 MXP	NO	ISDN H320	384	H261, H262, H263, H263+, HDS4; G711, G722, G722.1, G728	1	1
159	Salamanca	Castilla y León	Salamanca	Juzgados de Primera Instancia e Instrucción	YES	SONY PCS-1600P	NO	ISDN H320	384	H261, H263+ G711, G722, G728, G723	1	1
160	Salas de los Infantes	Castilla y León	Burgos	Juzgado de Primera Instancia e Instrucción	NO	FALCON	NO	ISDN H320	384	H261, H263+ G711, G722, G728, G723	1	1
161	San Clemente	Castilla La Mancha	Cuenca	Juzgado de Primera Instancia e Instrucción	NO	FALCON	NO	ISDN H320	384	H261, H263+ G711, G722, G728, G723	1	1
162	San Javier	Murcia	Murcia	Juzgado de Primera Instancia e Instrucción	YES	TAND-BERG 550 MXP	NO	ISDN H320	384	H261, H262, H263, H263+, HDS4; G711, G722, G722.1, G728	1	1
163	Segovia	Castilla y León	Segovia	Juzgados de Primera Instancia e Instrucción (Fiscalía)	YES	SONY PCS-1600P	NO	ISDN H320	384	H261, H263+ G711, G722, G728, G723	1	1
164	Segovia	Castilla y León	Segovia	Juzgado de lo Penal	YES	TAND-BERG 550 MXP	NO	ISDN H320	384	H261, H262, H263, H263+, HDS4; G711, G722, G722.1, G728	1	1
165	Segovia	Castilla y León	Segovia	Juzgados de Primera Instancia e Instrucción	YES	SONY PCS-1600P	NO	ISDN H320	384	H261, H263+ G711, G722, G728, G723	1	1
166	Sepulveda	Castilla y León	Segovia	Juzgado de Primera Instancia e Instrucción	NO	FALCON	NO	ISDN H320	384	H261, H263+ G711, G722, G728, G723	1	1
167	Sigüenza	Castilla La Mancha	Guadalajara	Juzgado de Primera Instancia e Instrucción	YES	SONY PCS-1600P	NO	ISDN H320	384	H261, H263+ G711, G722, G728, G723	1	1
168	Soria	Castilla y León	Soria	Audiencia Provincial	YES	TAND-BERG 550 MXP	NO	ISDN H320	384	H261, H262, H263, H263+, HDS4; G711, G722, G722.1, G728	1	1
169	Soria	Castilla y León	Soria	Audiencia Provincial (Fiscalía)	YES	SONY PCS-1600P	NO	ISDN H320	384	H261, H263+ G711, G722, G728, G723	1	1

No	City	Community	Province	Court name	Encryption possible YES/NO	Equipment type and make	Multipoint connection possible YES/NO	ISDN or IP	Speed (kbps)	Protocols and standards used	Number of cameras	Number of screens
170	Soria	Castilla y León	Soria	Audiencia Provincial Civil	YES	SONY PCS-1600P	NO	ISDN H320	384	H261, H263+ G711, G722, G728, G723	1	1
171	Soria	Castilla y León	Soria	Juzgado de lo Social	YES	SONY PCS-1600P	NO	ISDN H320	384	H261, H263+ G711, G722, G728, G723	1	1
172	Talavera	Castilla La Mancha	Toledo	Juzgado de Primera Instancia e Instrucción	YES	TAND-BERG 550 MXP	NO	ISDN H320	384		1	1
173	Tarancón	Castilla La Mancha	Cuenca	Juzgado de Primera Instancia e Instrucción	NO	FALCON	NO	ISDN H320	384	H261, H263+ G711, G722, G728, G723	1	1
174	Toledo	Castilla La Mancha	Toledo	Audiencia Provincial Civil	YES	SONY PCS-1600P	NO	ISDN H320	384	H261, H263+ G711, G722, G728, G723	1	1
175	Toledo	Castilla La Mancha	Toledo	Juzgados de Primera Instancia e Instrucción	YES	TAND-BERG 550 MXP	NO	ISDN H320	384	H261, H262, H263, H263+, HDS4; G711, G722, G722.1, G728	1	1
176	Tomeillo	Castilla La Mancha	Ciudad Real	Juzgado de Primera Instancia e Instrucción	YES	TAND-BERG 550 MXP	NO	ISDN H320	384	H261, H262, H263, H263+, HDS4; G711, G722, G722.1, G728	1	1
177	Tomeillo	Castilla La Mancha	Ciudad Real	Juzgado de Primera Instancia e Instrucción	YES	TAND-BERG 550 MXP	NO	ISDN H320	384	H261, H262, H263, H263+, HDS4; G711, G722, G722.1, G728	1	1
178	Torrijos	Castilla La Mancha	Toledo	Juzgado de Primera Instancia e Instrucción	NO	FALCON	NO	ISDN H320	384	H261, H263+ G711, G722, G728, G723	1	1
179	Totana	Murcia	Murcia	Juzgado de Primera Instancia e Instrucción	YES	TAND-BERG 550 MXP	NO	ISDN H320	384	H261, H262, H263, H263+, HDS4; G711, G722, G722.1, G728	1	1
180	Trujillo	Extremadura	Cáceres	Juzgado de Primera Instancia e Instrucción	YES	TAND-BERG 550 MXP	NO	ISDN H320	384	H261, H262, H263, H263+, HDS4; G711, G722, G722.1, G728	1	1
181	Valdepeñas	Castilla La Mancha	Ciudad Real	Juzgado de Primera Instancia e Instrucción	YES	NA	NO	ISDN H320	384	H261, H263+ G711, G722, G728, G723	1	1
182	Valencia de Alcántara	Extremadura	Cáceres	Juzgado de Primera Instancia e Instrucción	NO	FALCON	NO	ISDN H320	384	H261, H263+ G711, G722, G728, G723	1	1



No	City	Community	Province	Court name	Encryption possible YES/NO	Equipment type and make	Multipoint connection possible YES/NO	ISDN or IP	Speed (kbps)	Protocols and standards used	Number of cameras	Number of screens
183	Valladolid	Castilla y León	Valladolid	Juzgado de Primera Instancia	YES	TAND-BERG 550 MXP	NO	ISDN H320	384	H261, H262, H263, H263+, HDS4; G711, G722, G722.1, G728	1	1
184	Valladolid	Castilla y León	Valladolid	Juzgado de Primera Instancia	YES	SONY PCS-1600P	NO	ISDN H320	384	H261, H263+ G711, G722, G728, G723	1	1
185	Valladolid	Castilla y León	Valladolid	Audiencia Provincial (Fiscalía)	YES	SONY PCS-1600P	NO	ISDN H320	384	H261, H263+ G711, G722, G728, G723	1	1
186	Valladolid	Castilla y León	Valladolid	Audiencia Provincial Civil	YES	SONY PCS-1600P	NO	ISDN H320	384	H261, H263+ G711, G722, G728, G723	1	1
187	Valladolid	Castilla y León	Valladolid	Juzgado de Familia	YES	TAND-BERG 550 MXP	NO	ISDN H320	384	H261, H262, H263, H263+, HDS4; G711, G722, G722.1, G728	1	1
188	Valladolid	Castilla y León	Valladolid	Juzgado de MeNIEres	YES	TAND-BERG 550 MXP	NO	ISDN H320	384	H261, H262, H263, H263+, HDS4; G711, G722, G722.1, G728	1	1
189	Valladolid	Castilla y León	Valladolid	Juzgado de Primera Instancia	YES	TAND-BERG 550 MXP	NO	ISDN H320	384	H261, H262, H263, H263+, HDS4; G711, G722, G722.1, G728	1	1
190	Valladolid	Castilla y León	Valladolid	Tribunal Superior de Justicia (Fiscalía)	YES	SONY PCS-1600P	NO	ISDN H320	384	H261, H263+ G711, G722, G728, G723	1	1
191	Villablanca	Castilla y León	León	Juzgado de Primera Instancia e Instrucción	NO	FALCON	NO	ISDN H320	384	H261, H263+ G711, G722, G728, G723	1	1
192	Villalpando	Castilla y León	Zamora	Juzgado de Primera Instancia e Instrucción	YES	TAND-BERG 550 MXP	NO	ISDN H320	384	H261, H262, H263, H263+, HDS4; G711, G722, G722.1, G728	1	1
193	Villanueva de la Serena	Extremadura	Badajoz	Juzgado de Primera Instancia e Instrucción	YES	TAND-BERG 550 MXP	NO	ISDN H320	384	H261, H262, H263, H263+, HDS4; G711, G722, G722.1, G728	1	1
194	Villanueva de los Infantes	Castilla La Mancha	Ciudad Real	Juzgado de Primera Instancia e Instrucción	YES	TAND-BERG 550 MXP	NO	ISDN H320	384	H261, H262, H263, H263+, HDS4; G711, G722, G722.1, G728	1	1
195	Villarcal de los Infantes	Castilla y León	Burgos	Juzgado de Primera Instancia e Instrucción	NO	FALCON	NO	ISDN H320	384	H261, H263+ G711, G722, G728, G723	1	1

No	City	Community	Province	Court name	Encryption possible YES/NO	Equipment type and make	Multipoint connection possible YES/NO	ISDN or IP	Speed (kbps)	Protocols and standards used	Number of cameras	Number of screens
196	Villarrobledo	Castilla La Mancha	Albacete	Juzgado de Primera Instancia e Instrucción	NO	FALCON	NO	ISDN H320	384	H261, H263+ G711, G722, G728, G723	1	1
197	Vitigudi-NIE	Castilla y León	Salamanca	Juzgado de Primera Instancia e Instrucción	NO	FALCON	NO	ISDN H320	384	H261, H263+ G711, G722, G728, G723	1	1
198	Yecla	Murcia	Murcia	Juzgado de Primera Instancia e Instrucción	YES	TANDBERG 550 MXP	NO	ISDN H320	384	H261, H262, H263, H263+, HDS4; G711, G722, G722.1, G728	1	1
199	Zafra	Extremadura	Badajoz	Juzgado de Primera Instancia e Instrucción	YES	TANDBERG 550 MXP	NO	ISDN H320	384	H261, H262, H263, H263+, HDS4; G711, G722, G722.1, G728	1	1
200	Zamora	Castilla y León	Zamora	Audiencia Provincial Civil	YES	SONY PCS-1600P	NO	ISDN H320	384	H261, H263+ G711, G722, G728, G723	1	1
201	Zamora	Castilla y León	Zamora	Juzgado de MeNIEres	YES	TANDBERG 550 MXP	NO	ISDN H320	384	H261, H262, H263, H263+, HDS4; G711, G722, G722.1, G728	1	1
202	Zamora	Castilla y León	Zamora	Juzgado de Primera Instancia e Instrucción (Fiscalía)	YES	SONY PCS-1600P	NO	ISDN H320	384	H261, H263+ G711, G722, G728, G723	1	1